

SCALEX[®] 880 PLUS

PIEZO ULTRASONIC SCALER



- Auto-sourcing the frequency of any compatible tip to achieve smooth operation.
- Load-adjusting function provides stable and effortless scaling.
- Special TURBO function helps remove especially hard calculi by increasing power relative to the hardness.
- Streamlined compact size and slim lightweight handpiece.
- Innovative circuitry designed for greater stability during operation.
- Extremely gentle on the patient.
- Available selection of a wide variety of high quality tips to correspond with specific clinical applications.
- Unit is available for 100-240V 50/60Hz operation.
- EMS type tips compatible.

ISO 13485

GMP

DENTAMERICA[®]

SCALEX[®] 880 PLUS

SCALEX® 880 PLUS

PIEZO ULTRASONIC SCALER

※PIEZO SCALER TIPS



88003

Reorder No.155-01
Universal A



88004

Reorder No.155-51
Universal B



88005

Reorder No.155-02
Chisel



88006

Reorder No.155-48
Perio



88002

Reorder No.155-03
Endo Chuck

SPECIFICATIONS:

- * INPUT: 100V~240V 50/60Hz
- * OUTPUT: DC 24V 1.5A
- * FREQUENCY: 27,000 to 32,000 Hz/sec
- * DIMENSIONS: W140xD140xH50mm
- * WEIGHT: 1,000g

DENTAMERICA®

18688 E. San Jose Ave.
City of Industry, CA 91748 U.S.A.
Phone: (626) 912-1388
Fax: (626) 913-0510
www.dentamerica.com



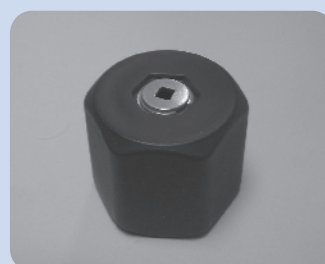
Handpiece

Autoclavable handpiece with piezo ceramic crystals and titanium tip socket structure.



Foot Control

Unique compact foot control designed to be activated at any angle and accessible from 360° degrees.



Torque-limiting Tip Wrench

Special autoclavable wrench prevents damage to scaler tip when tightening.

DISTRIBUTOR